



TOR MAS / MAX

Mammography Phantoms

A test object designed to be used quickly and easily on a routine basis to provide an ongoing check of imaging performance, particularly those aspects which are most liable to deterioration. An ongoing record of these numbers will reveal any trend towards deterioration in imaging performance.

TOR MAS and TOR MAX Consist of the following:

- **Standard PMMA test block**
(6 pieces $10.0 \pm 10\%$ mm thick pmma 240mm diameter semi-circle
2 pieces $5.0 \pm 10\%$ mm thick pmma 240mm diameter semi-circle)
- **Sensitometry**
(Ten-step grey-scale plus two points for Sensitometric measurements)
- **High Resolution limit**
(1.0 to 20.0 LP/mm)
x1 for TOR MAS
x2 for TOR MAX
- **Low Contrast Resolution**
(1.8 to 5 line pairs/mm, representing filamentary structures)
- **Low-contrast large-detail detectability**
(12 details, 5.6mm diameter)
- **High-contrast small-detail detectability**
(11 details, 0.5 and 0.25mm diameter)
- **Microcalcifications**
(Particles representing microcalcifications on a step-wedge background, median sizes 125, 234, 328 microns)



深圳市展业达鸿科技有限公司

吕先生: 15920060912 (微信同号) 0755-22934005 (座机)

地址: 深圳市福田区八卦二路八卦岭工业区615栋419

邮箱: hongqi@thingstet.com

网址: www.thingstet.com



TOR MAS / MAX

Mammography

Product X-Rays



fig. 1 TOR MAS X-ray image

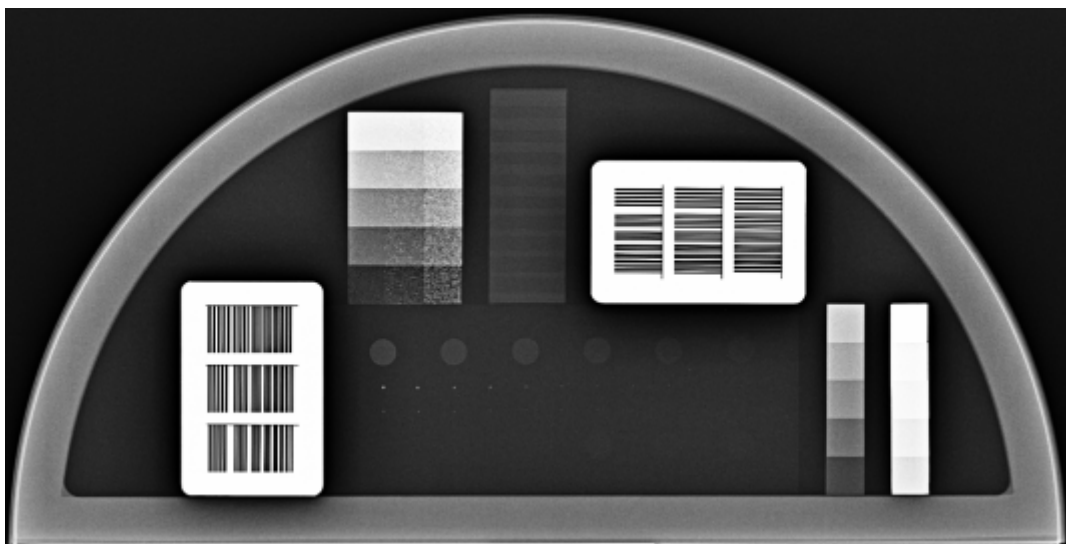


fig. 2 TOR MAX X-ray image

深圳市展业达鸿科技有限公司

吕先生: 15920060912 (微信同号) 0755-22934005 (座机)

地址: 深圳市福田区八卦二路八卦岭工业区615栋419

邮箱: hongqi@thingstet.com

网址: www.thingstet.com