

# Virtual Human Male Pelvis Phantom

Model 801-P



## THE NEXT GENERATION IN ANTHROPOMORPHIC PHANTOMS

The CIRS Model 801-P phantom is our most realistic, tissue equivalent phantom available. The phantom was designed for use in diagnostic radiology and radiation therapy for imaging dosimetry teaching and demonstration applications. All anatomical dimensions of the phantom are based on The Visible Human Project (VHP) data sets that serve as a reference for the study of human anatomy and are available through the National Library of Medicine.

CIRS has combined this anatomical detail with our advanced tissue mimicking technology. The phantom is made from proprietary epoxy materials that mimic the density and radiation attenuation properties of human tissue within 1% from 50 keV to 25 MeV. It contains anatomically precise bone, cartilage, spinal cord, vertebral disks, muscle, intestines, bladder, prostate, rectum and interstitial fat.

Just like the CIRS ATOM® line of phantoms, the VHP Phantom can be purchased uncut or segmented into 25mm thick contiguous sections. CIRS offers a hole grid options of 3 cm x 3 cm.

The grid contains 5mm diameter through holes filled with homogeneous tissue equivalent plugs for TLD placement. Hole locations are optimized for internal organ dosimetry. Ion chamber cavities, other grid patterns and hole diameters are available upon request.

### Features

- Based on the Visible Human Project data set
- Superior tissue simulation and lifelike imaging properties
- Accommodates wide variety of detectors

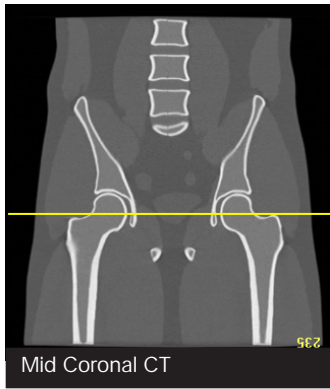
深圳市展业达鸿科技有限公司

吕先生: 15920060912 (微信同号) 0755-22934005 (座机)

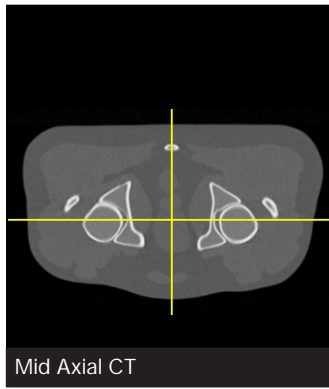
地址: 深圳市福田区八卦二路八卦岭工业区615栋419

邮箱: hongqi@thingstet.com

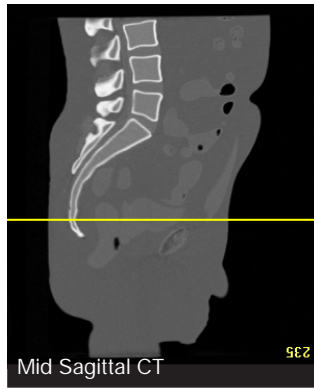
网址: www.thingstet.com



Mid Coronal CT



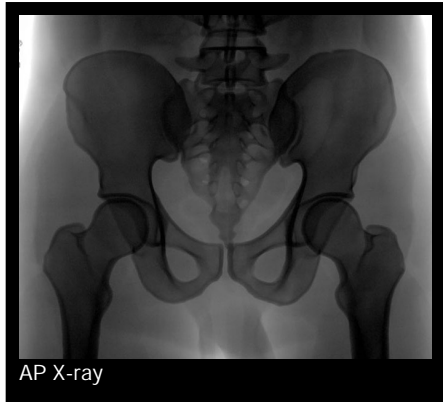
Mid Axial CT



Mid Sagittal CT



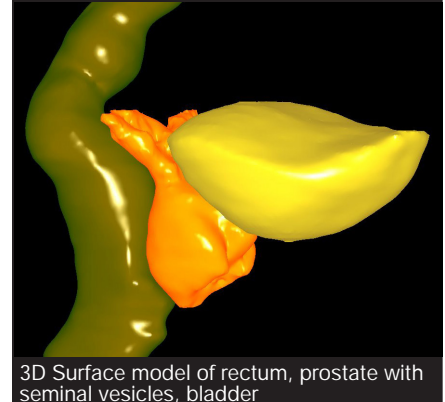
AP Scout



AP X-ray



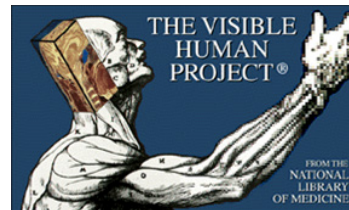
X-ray of femoral head & socket



3D Surface model of rectum, prostate with seminal vesicles, bladder



\* 801-P-F Custom Slicing to show Internal Anatomy



**SPECIFICATIONS**

<b>OVERALL DIMENSIONS:</b>	35.6 cm x 30.5 cm x 25.4 cm (14" x 12" x 10")
<b>PHANTOM WEIGHT:</b>	24.9 kg (55 lb)
<b>MATERIALS:</b>	Epoxy Resin

**MODEL 801-P OPTIONS**

MODEL NO.	DESCRIPTION
801-P-A	Virtual Human Male Pelvis Phantom - Sectional without holes
801-P-B	Virtual Human Male Pelvis Phantom - Sectional with Ø 5 mm holes in a 3x3 cm grid spacing
801-P-F	Virtual Human Male Pelvis Phantom - Non-sectioned without holes

© 2013 Computerized Imaging Reference Systems, Inc. All rights reserved.  
 Specifications subject to change without notice.  
 Publication: 801-P\_DS 072220

**MODEL 801-P INCLUDES**

QTY	DESCRIPTION
1	Virtual Human Male Pelvis Phantom
1	Carry Case
-	60 Month Warranty

\*Custom Slicing is available upon request.

**深圳市展业达鸿科技有限公司**  
 吕先生: 15920060912 (微信同号) 0755-22934005 (座机)  
 Computerized Imaging Reference Systems, Inc. has been certified by UL DQS  
 Inc. to ISO 13485:2016. Certificate Registration No. 15000005-PP2616  
 深圳市宝安区西乡街道铁岗社区西乡大道5115栋419  
 邮箱: hongqi@thingstet.com  
 网址: www.thingstet.com