

Bone Density Calibration Phantom

For the HU vs. CaHA calibrations with respect to Bone Mineral Densitometry evaluation of bones

The Bone Density Calibration Phantoms house three fixed 18 mm cylindrical inserts providing 0 (water), 100 and 200 mg HA/ccm.

The phantoms are directly placed under an object to evaluate the Bone Mineral Density (BMD) by CT.

CTWATER[®], a solid water equivalent plastic offering the same X-ray attenuation properties as water is used as base material for the inserts. The shape of the phantom is slightly bended for most convenient positionings under the object.

The phantoms are available in different lengths and different HA concentrations on request.

Each phantom is separately calibrated with respect of its Bone Mineral Density and comes with an acceptance protocol.

Specifications

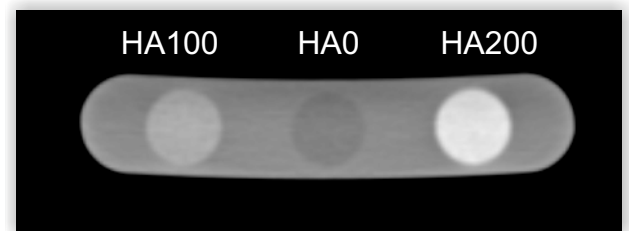
- Phantom cross section 120 mm x 25 mm
- Available length 200 - 700 mm
- Phantom weight (200 mm)..... 400 g
- Housing soft tissue-equivalent (at 120 kV)
- Insert diameter 18 mm
- Insert I 100 mg HA/cm³
- Insert II CTWATER[®] (0 mg HA / cm³)
- Insert III 200 mg HA/cm³

References

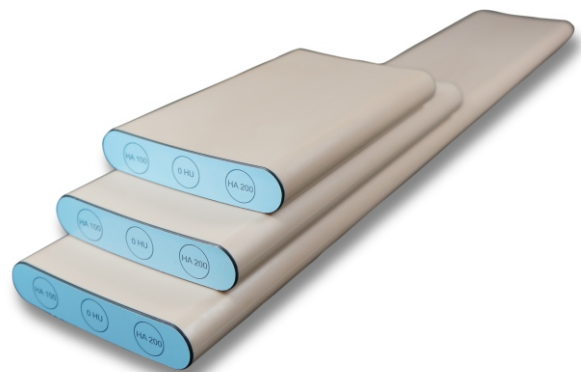
[1] Museyko, O., Heinemann A., Krause M., Wulff B., Amling M., Püschel K., Glüer C. C., Kalender W., Engelke K.: A low-radiation exposure protocol for 3D QCT of the spine. Osteoporosis International 2013; 10.1007/s00198-013-2544-x



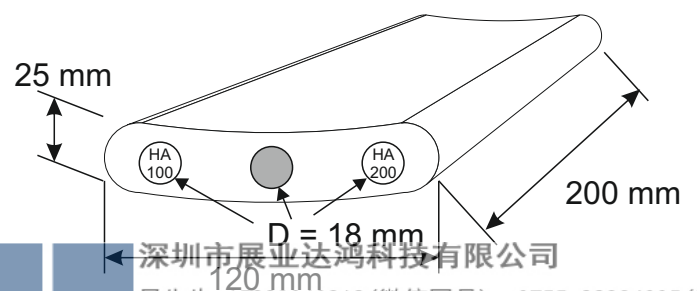
QRM-BDC Phantom 200 mm length



CT-image of the BDC Phantom (120 kV)



Different versions in length of QRM-BDC (200, 300 and 700 mm)



深圳市展业达鸿科技有限公司
 吕先生: 15920060912 (微信同号) 0755-22934005 (座机)
 地址: 深圳市福田区八卦二路八卦岭工业区615栋419
 邮箱: hongqi@thingstet.com
 网址: www.thingstet.com